

## SF SERIES - 60 MINUTE FIRE



The American Security® SF GUN SAFE offers both performance and value. For burglary protection, it has a stout 3/16" - thick steel plate door. For fire protection, it is lined with 3 to 4 layers of drywall that are strategically engineered for optimal fire protection. This enables the SF Gun Safe to pass a verified 60-minute fire test at Intertek, an independent testing laboratory.

### SECURITY

- Four-way bolt work
- 14 massive 1¼" chrome plated bolts
- Anchor holes provided

### FIRE PROTECTION

- Lined with three to four layers of drywall
- 60-minute Intertek verified fire rating
- Dual door seals to protect against fire and smoke

### FUNCTIONALITY

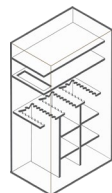
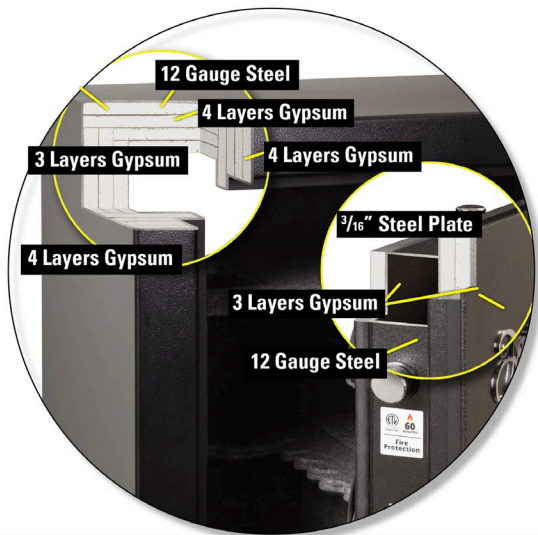
- U.L. listed ESL5 electronic lock with illuminated keypad
- Decorative three-spoke handle
- Industry's most flexible interior
- Door organizer
- Storage for two long guns on door

### COLOR(S):

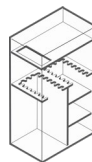
Textured black (BK) with black nickel hardware (LTN)

Dimensions listed are exterior dimensions. Add 3" to overall depth for lock and handle.

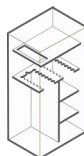
### SF SERIES CONSTRUCTION



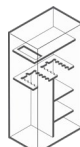
15-15-5-30-40  
GUN INTERIOR  
MODEL: SF7240E5



17-17-34  
GUN INTERIOR  
MODEL: SF6036E5



15-15-30  
GUN INTERIOR  
MODEL: SF6030E5



11-11-22  
GUN INTERIOR  
MODEL: SF6032E5



SF6032E5

Model	Outside Dimension H" x W" x D"	Inside Dimension H" x W" x D"	Door Clearance H" x W"	Door Thickness"	Body Thickness"	Interior Capacity	Weight	Lock Type
SF7240E5	72 x 40 x 26	66-½ x 36 x 19	63-½ x 31-½	3-5/8 / 3/16	2	15-15-15-30-40 + 2 Gun	1,086 lbs.	ESL5
SF6036E5	59 x 36 x 26	53-½ x 32 x 19	50-½ x 27-½	3-5/8 / 3/16	2	17-17-34 + 2 Gun	840 lbs.	ESL5
SF6030E5	59 x 30 x 26	53-½ x 26 x 19	50-½ x 21-½	3-5/8 / 3/16	2	15-15-30 + 2 Gun	748 lbs.	ESL5
SF6032E5	59 x 30 x 21	53-½ x 26 x 15	50-½ x 21-½	3-5/8 / 3/16	2	11-11-22 + 2 Gun	662 lbs.	ESL5

# GUN SAFES

## TF SERIES - 30 MINUTE FIRE



### SECURITY

- Four-way bolt work
- 14 1/4" chrome plated bolts on TF5924E5
- 8 1" chrome plated bolts on TF5517E5
- Anchor holes provided
- U.L. listed ESL5 electronic lock with illuminated keypad

### FIRE PROTECTION

- Lined with two layers of drywall on the ceiling and door
- Lined with one layer of drywall in all the walls
- 30-minute factory fire label
- Dual door seals to protect against fire and smoke

### FUNCTIONALITY

- Decorative three-spoke handle on TF5942E5, "L" style handle on TF5517E5.
- Industry's most flexible interior
- Door organizer
- TF5924 has storage for one long gun on the door

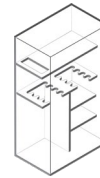
### COLOR(S):

Textured black (BK) with black nickel hardware (LTN)

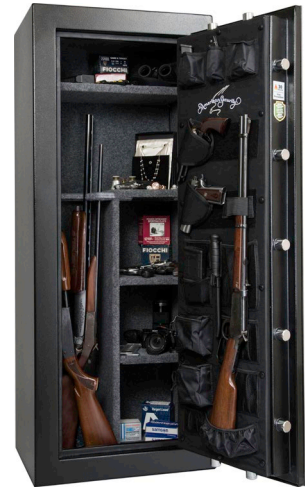
Dimensions listed are exterior dimensions. Add 3" to overall depth for lock and handle.



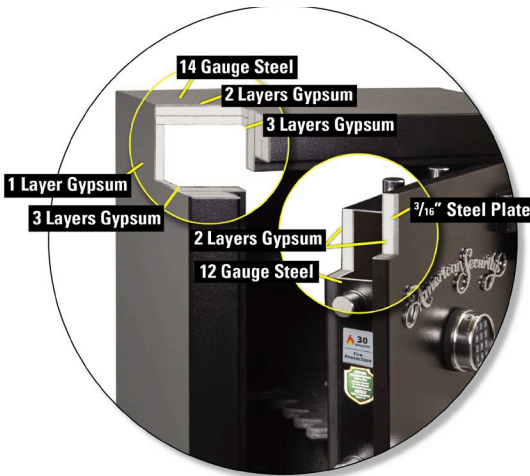
TF5924E5



8-8-16  
GUN INTERIOR  
MODEL: TF5924E5



### TF SERIES CONSTRUCTION



TF5517E5



11  
GUN INTERIOR  
MODEL: TF5517E5



Model	Outside Dimension H" x W" x D"	Inside Dimension H" x W" x D"	Door Clearance H" x W"	Door Thickness"	Body Thickness"	Interior Capacity	Weight	Lock Type
TF5924E5	59 x 24 x 18	56-1/2 x 22 x 15	52 x 16-3/4	3-5/8 / 3/16	1(*)	8-8-16 Gun + 1 Gun	388 lbs.	ESL5
TF5517E5	55-1/4 x 17-3/4 x 16	52-1/2 x 16 x 13	49-1/2 x 12	3-1/4 / 3/16	1(*)	11 Gun	286 lbs.	ESL5

\*Note: Actual thickness may vary.

## HANDGUN SECURITY



PS1210HD



PS1208EZ



HAS410

Model	Outside Dimension H" x W" x D"	Inside Dimension H" x W" x D"	Door Clearance H" x W"	Door Thickness"	Body Thickness"	Interior Capacity	Weight	Lock Type
PS1210HD	10 ¼ x 12 1/5 x 4 ¼	9-5/8 x 11-5/8 x 2-7/16	9-5/8 x 11-5/8	3/16	10 GA	273 cu. in.	24 lbs.	Simplex Mechanical Push Button
PS1208EZ	8 1/8 x 12 ¼ x 4	7-3/4 x 11-3/4 x 2-7/16	7-3/4 x 11-3/4	14 GA	14 GA	222 cu. in.	11 lbs.	Simplex Mechanical Push Button
HAS410	12 x 10 x 4	9-3/4 x 7-1/4 x 2-7/16	10-9/16 x 7-1/4	3/16	10 GA	172 cu. in.	20 lbs.	Simplex Mechanical Push Button